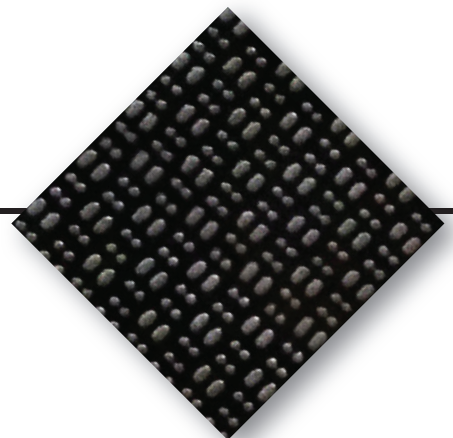


Technical Data

Isolator Membrane

Damp-proof Underlay



SO Isolator Membrane is a specially coated and patterned sheet underlay, reinforced with fibreglass. Specifically designed for the safe installation of a wide range of floor coverings on damp or contaminated sub floors, in domestic and light commercial settings.

The textured underside of the sheet creates an airspace between the membrane and the subfloor below. This airspace allows water vapour from damp subfloors to be ventilated out at the edges, preventing the further build up of moisture and protecting the floor covering and subfloor.

Features:

- Provides a continuous stabilized base which is resistant to damp.
- Rapid solution when laying over damp or contaminated sub floors.
- Reduces or eliminates the need for mechanical preparation.
- Sheet system allows for quick installation.
- Perfect for temporary floors where the existing flooring must be retained.

Properties:

Width	EN ISO 24341	1.45m
Roll Length	EN ISO 24341	25m
Thickness	EN ISO 24346	1.4mm
Coverage	EN ISO 24341	36.25m
Weight	EN ISO 23997	1600g/m ²
Dimensional Stability L/C	EN ISO 23999	0.2% +/- max
Flame Resistance	EN 13501-1	Bfl-S1
PCP Content	EN 12673	0
Formaldehyde Emission	ENV 717-1	E1
Vapour diffusion current density	EN 1931	1.4x10 ⁻⁸ kg/m ² xs
Vapour permability factor	EN 1931	6.6x10 ⁻¹²
Moisture tolerance	on cement floor	97% RH / 5% CM



Suitable for use over screed concrete bases with residual moisture content (max 5CM%), existing subfloor which lack a proper damp proof membrane, existing subfloor contaminated with oil or paint, firmly fixed existing flooring such as vinyl, ceramic or sheet metal.